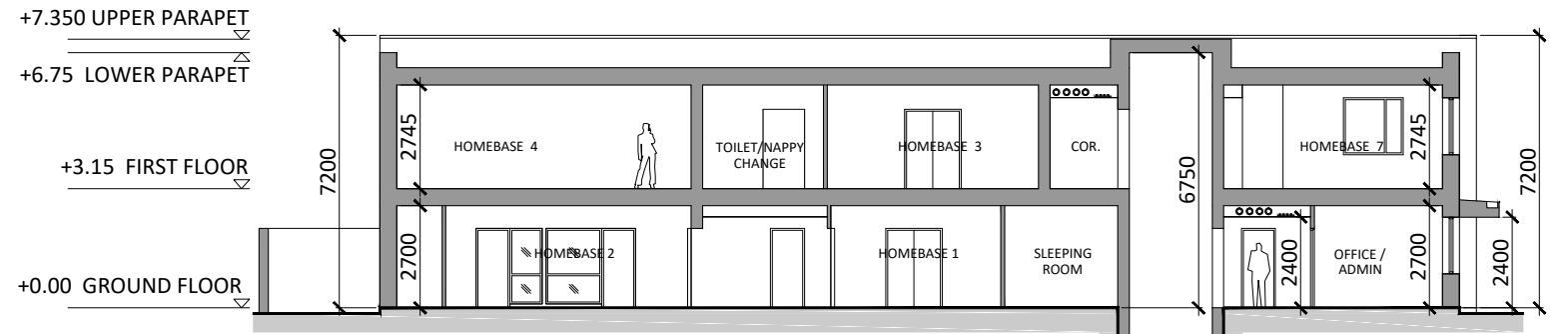
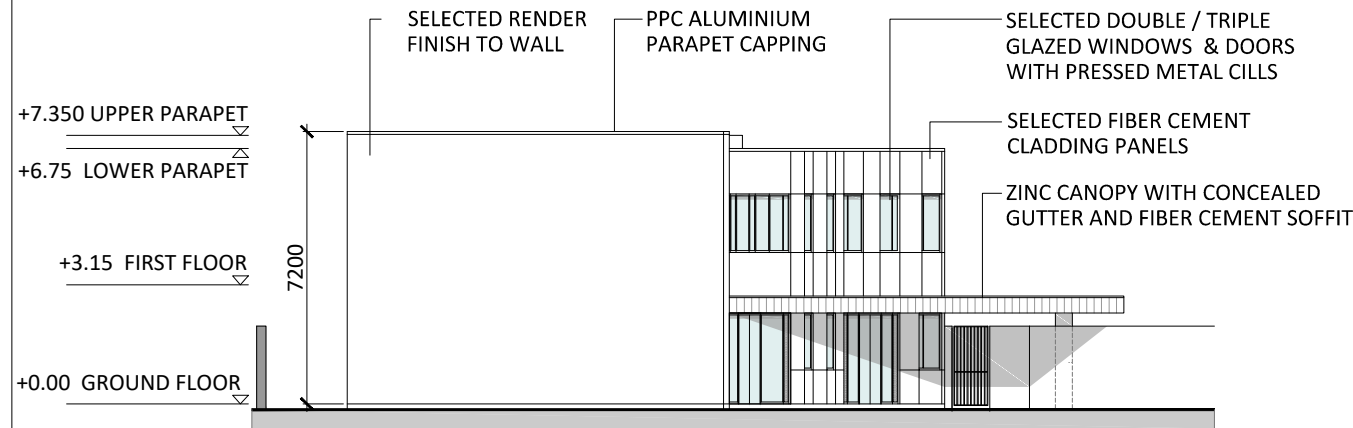


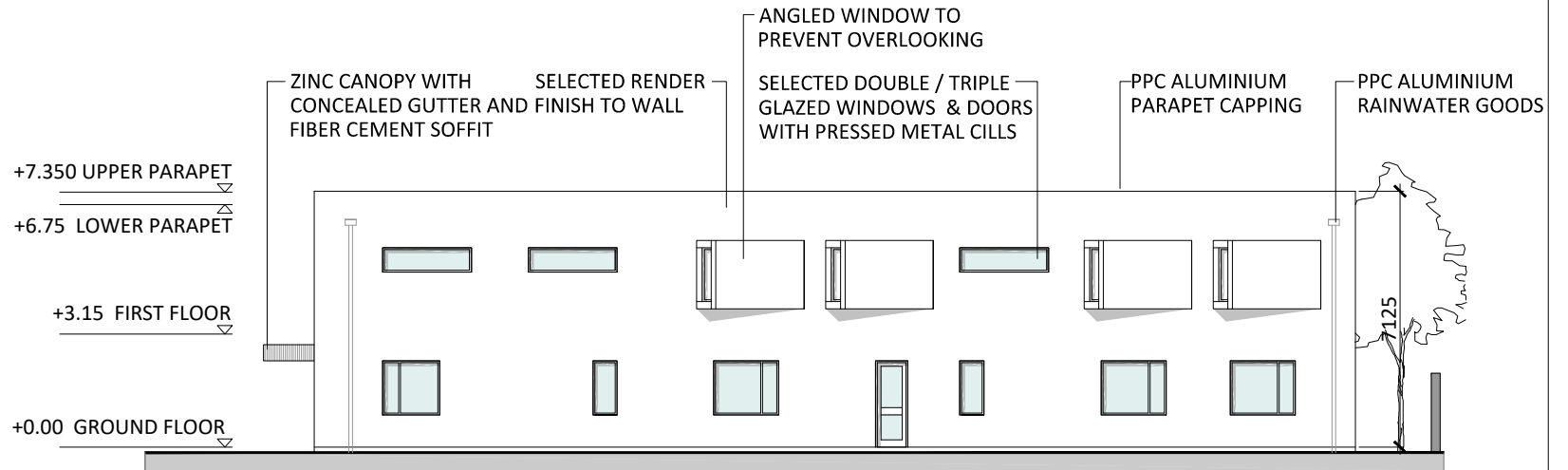
SECTION A-A
scale 1:200



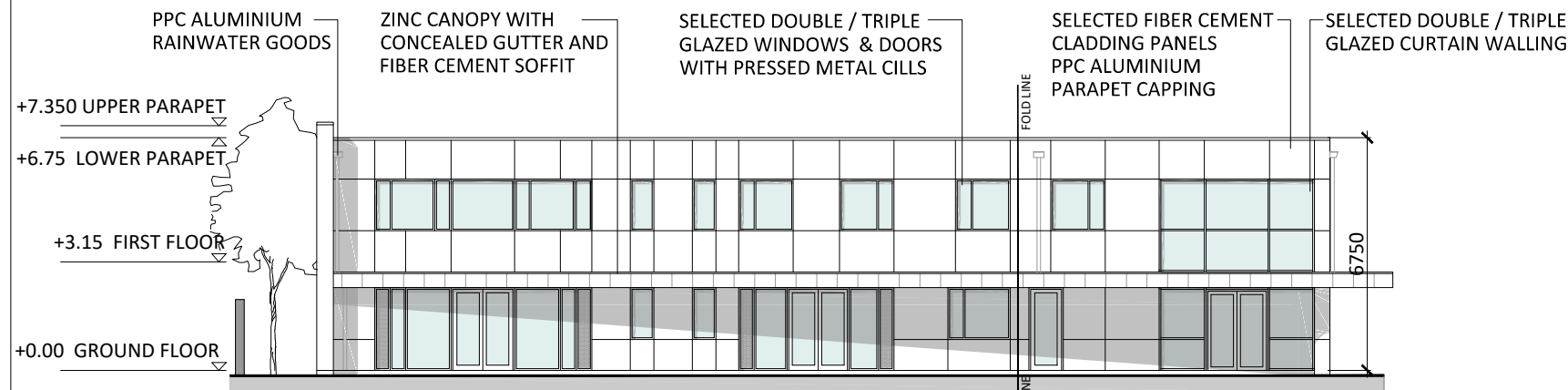
SECTION B-B
scale 1:200



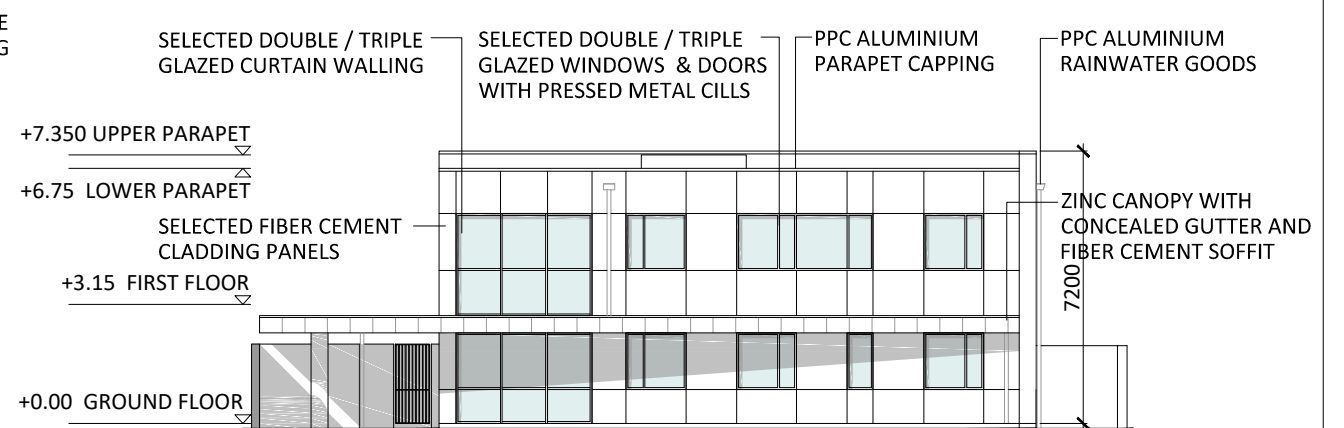
EAST ELEVATION
scale 1:200



SOUTH ELEVATION
scale 1:200



NORTH ELEVATION
scale 1:200



WEST ELEVATION
scale 1:200

CHILDCARE FACILITY
STOREYS: 2
AREA: 677m²
CAPACITY: 112 CHILDREN

Houses are tagged to show number & type; the house number is in the top section of the tag, e.g. 115 and the house type is in the lower section of the tag, e.g. T1



Revision Description	Date	Rev. No.	Issued by
Planning	15/05/2019	01	RD

omahony pike

architecture | urban design
Dublin: The Chapel, 26 South Mall
Cork: Mount St. Anne's, Milltown, Dublin 6 Co. Cork
Tel: +353 1 202 7400
Fax: +353 1 283 0822
www.omahonypike.com

Project No.: 1806
Project Lead: RN
Scale @ A3: 1:200
Date Printed: 15/05/2019
Drawn By: BK
Current Rev.: 01
Model No.: 1806-OMP-CR-ZZ-DR-A-XX-10000
Purpose: Planning

Project: Residential Development
Location: Blackrock, Dundalk, Co. Louth
Client: Kingsbridge Consultancy Ltd.

ALL DIMENSIONS IN MILLIMETERS
ALL LEVELS (IN METERS) ARE RELATED TO MALIN HEAD DATUM



Figured dimensions only to be used. This drawing is copyright of O'Mahony Pike Architects Ltd. All information is shared as per approved use in accordance with BS1192(2007) + A2(2016), Table 5; Standard Codes for Suitability of Models and Documents. If 'Information Approval Check' is empty, this information has been shared at S0 - WIP.

Drawing Title: CHILDCARE FACILITY - Section & Elevations
Drawing No.: 1806-OMP-CR-00-DR-A-XX-20000

Suitability - Checked By - Date